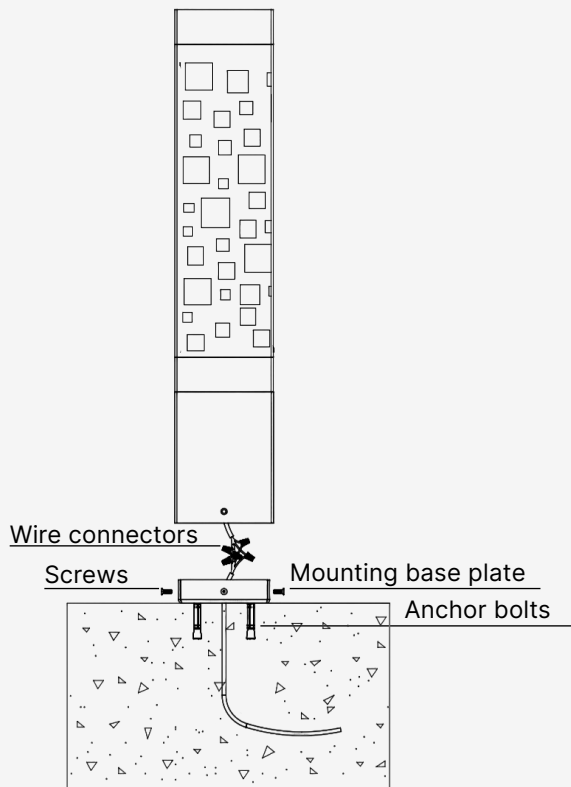


**IMPORTANT:** Carefully read all instructions before installing the fixture. Ignoring these guidelines could result in death, severe injury, or significant property damage. Keep these instructions for future use.

### ⚠ WARNING! RISK OF FIRE, ELECTRIC SHOCK, OR SERIOUS INJURY

- Always turn off power at the circuit breaker before beginning installation, maintenance, or service on the fixture.
- Installation should be carried out by a certified electrician in accordance with the National Electrical Code (NEC) and applicable local regulations.
  - Confirm compatibility between the fixture's rated voltage and the electrical supply before connecting.
  - LED elements are delicate electronic parts. Do not tamper with sealed sections of the fixture or touch LEDs with bare hands or tools.
- Avoid installing the fixture on circuits shared with heavy-duty equipment such as HVAC systems or motors, as this may expose it to harmful power surges.
  - The included driver or transformer must not be bypassed or substituted. Use the fixture only in its original configuration.
  - Fixtures must be connected in parallel, each with independent leads. Do not connect in series or daisy-chain multiple units.
- Factory-installed wiring must remain unmodified. Do not cut or alter pre-stripped coaxial or pendant cables.
- When making electrical connections, use only UL-certified waterproof connectors suitable for outdoor use.
- Ensure the mounting surface or foundation is stable, level, and structurally capable of supporting the fixture's weight.
- Select proper mounting hardware for the specific surface type. To preserve the powder-coated finish, avoid direct contact with concrete or rough materials that may cause abrasion or chipping.

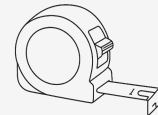
## INSTALLATION DIAGRAM



### Tools You May Need



Glasses



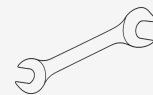
Measuring  
tape



Rubber  
gloves



Screwdriver



Spanner

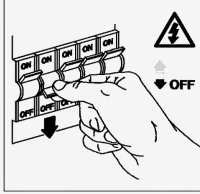
### CERTIFICATION



#### Step 1

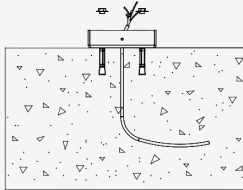
Carefully unpack the fixture and inspect all components for damage before beginning installation.

Verify that the cable is de-energized before proceeding



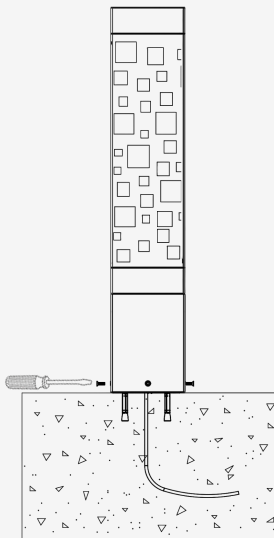
#### Step 3

Use the manufacturer-provided base plate as a template to precisely position and align the anchor bolts, ensuring they are installed vertically to prevent fixture tilting. For optimal stability and even load distribution, apply grout beneath the base plate. Make sure to maintain adequate clearance through the center opening for electrical wiring and access to bolt heads, especially if they will be concealed after installation.



#### Step 5

Mount the bollard to the base and secure with screws.

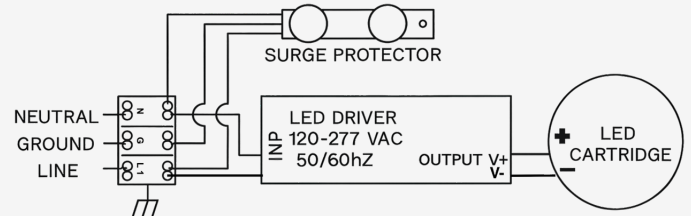


#### Step 2

Before installing the surface-mounted base, ensure that the supply conduit is properly routed to the center of the mounting location, in accordance with local electrical and building codes. The conduit should extend above the finished concrete surface to allow for safe wiring access through the center opening of the base plate.

#### Step 4

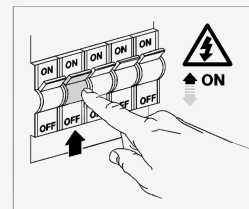
Wait until the concrete has fully set.



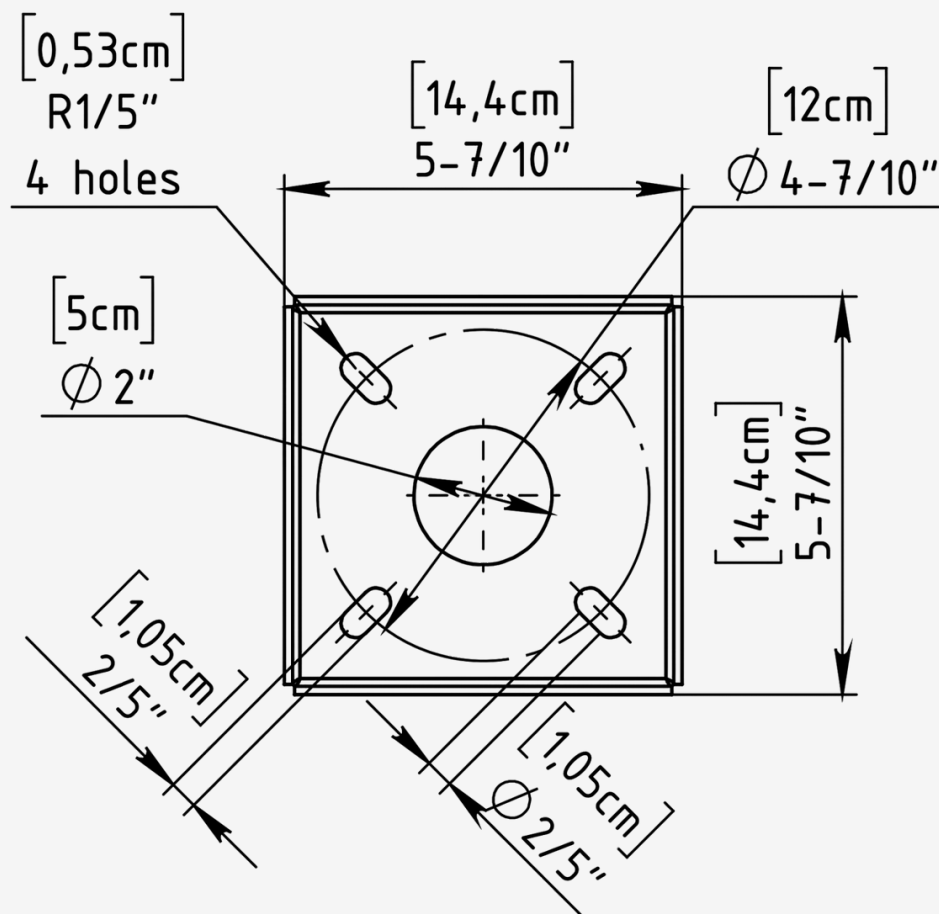
Pull the electrical conduit through the opening in the base plate. Connect the wires as follows: black to line (L), white to neutral (N), and green or bare copper to ground (GND), using the wire nuts included in the hardware kit. Make sure excess wires are secured away from any metal surfaces to prevent contact.

#### Step 6

Once installation is complete, turn the power ON at the main fuse box. The fixture should now operate properly.



## BOLT PATTERN



## CERTIFICATION



### MAINTENANCE NOTES

Clean fixture surfaces using a soft cloth and mild detergent.

#### What to Avoid

- Do not use abrasive cleaners or scouring pads.
- These can scratch the powder coat, exposing aluminum to oxidation.
- Avoid strong solvents like acetone, paint thinner, or alcohol-based cleaners.
- They can break down the powder coating's integrity.
- Don't use high-pressure washers too close to the surface.
- Excessive pressure may damage seals and finishes.
- Never clean under direct sunlight or while hot.
- This may cause streaking or spotting.

### LIMITED WARRANTY

A WE Lighting warrants that its outdoor bollards and column luminaires are free from defects in materials and workmanship under normal use and conditions for a period of [5 years] from the original date of purchase. This warranty is valid only when the product is installed and operated in accordance with the instructions provided in this manual, the National Electrical Code (NEC), and all applicable local building and electrical regulations.

#### This warranty does not apply to:

- Damage resulting from improper installation, failure to follow installation instructions, or insufficient maintenance.
- Use with incompatible or unstable power supplies, including unauthorized modifications of the fixture or its components.
- Mechanical damage, corrosion, or deterioration caused by installation in conditions that exceed the product's rated specifications (e.g., extreme temperature, humidity, wind load).
- Electrical failure due to power surges, lightning strikes, voltage irregularities, or operation on circuits shared with inductive loads (e.g., HVAC units, pumps, motors).
- Mounting on unstable or unapproved foundations, including surfaces not rated to bear the weight or vibration load of the fixture.
- Installation in submerged or continuously wet environments, unless explicitly rated for such conditions (e.g., IP68 or higher).
- Exposure to aggressive substances such as road salt, industrial chemicals, oil, or airborne pollutants that may degrade the materials or finish.

#### Warranty Claims:

To initiate a warranty claim, please contact A WE Lighting's Customer Service team. You will be required to provide:

- Proof of purchase (invoice or receipt)
- A detailed description of the problem
- Photographic evidence of the issue, including installation site and close-up views of the defect

A WE Lighting reserves the right to inspect the product (either on-site or via return shipping) to determine whether it qualifies for coverage under this warranty.

#### CERTIFICATION

